



SUNNYSIDE COAL MINE – MONTHLY MONITORING SUMMARY

Site Information

EPL No: 12957

EPA Website Link: <http://www.environment.nsw.gov.au/prpoeoapp/ViewPOEOLicence.aspx?DOCID=31541&SYSUID=1&LICID=12957>

Licensee: Namoi Mining Pty Ltd

Licensee Address: Sunnyside Coal Project, 259 Coocooboona Lane, GUNNEDAH NSW 2380

EPL Monitoring Points: See Figure 1 below

Sampling Period: January 2013

Publication Date: 21st February 2013 (re-published 9th September 2014)

Table 1 - No Pollutant Limits Apply

EPL ID	Pollutant	Units of Measure	Monitoring Frequency	No. of Samples for the Month	Date(s) Sampled	Date Obtained	Min Value	Mean Value	Median Value	Max Value
1	Particulates-Deposited Matter	g/m ² /month	Continuous	1	21/1/2013	30/1/2013	3.4	3.4	3.4	3.4
2	Particulates-Deposited Matter	g/m ² /month	Continuous	1	21/1/2013	30/1/2013	3.0	3.0	3.0	3.0
4	Particulates-Deposited Matter	g/m ² /month	Continuous	1	21/1/2013	30/1/2013	7.9	7.9	7.9	7.9
5	Particulates-Deposited Matter	g/m ² /month	Continuous	1	21/1/2013	30/1/2013	2.8	2.8	2.8	2.8
6	Particulates-Deposited Matter	g/m ² /month	Continuous	1	21/1/2013	30/1/2013	2.8	2.8	2.8	2.8
7	PM ₁₀	µg/m ³	Every 6 days	4	3,9,21,27/1/2013	13/2/2013	0.6	18	13.1	45.2
9	Conductivity	µS/cm	Special Frequency 1*	0	-	-	-	-	-	-
	Total Organic Carbon	mg/L		0	-	-	-	-	-	-
10	Conductivity	µS/cm	Special Frequency 1*	0	-	-	-	-	-	-
	Total Organic Carbon	mg/L		0	-	-	-	-	-	-

SUNNYSIDE COAL MINE – MONTHLY MONITORING SUMMARY

EPL ID	Pollutant	Units of Measure	Monitoring Frequency	No. of Samples for the Month	Date(s) Sampled	Date Obtained	Min Value	Mean Value	Median Value	Max Value
11	TSS	mg/L	Special Frequency 2**	0	-	-	-	-	-	-
	Conductivity	µS/cm		0	-	-	-	-	-	-
	Oil & Grease	mg/L		0	-	-	-	-	-	-
	pH	pH		0	-	-	-	-	-	-
	Total Organic Carbon	mg/L		0	-	-	-	-	-	-
12	TSS	mg/L	Special Frequency 2**	0	-	-	-	-	-	-
	Conductivity	µS/cm		0	-	-	-	-	-	-
	Oil & Grease	mg/L		0	-	-	-	-	-	-
	pH	pH		0	-	-	-	-	-	-
	Total Organic Carbon	mg/L		0	-	-	-	-	-	-

* Special Frequency 1 means the collection of samples as soon as practicable after each discharge commences and in any case not more than 12 hours after each discharge commences.

** Special Frequency 2 means collection of samples quarterly (in the event of flow during the quarter) at a time when there is flow and as soon as practicable after each wet weather discharge from points 9 and 10 commences and in any case not more than 12 hours after each discharge commences.

Table 2 - Pollutant Limits Apply

EPL ID	Pollutant	Units of Measure	Monitoring Frequency	No. of Samples for the Month	Date Sampled	Date Obtained	Min Value	Max Value	100%ile Limit	Exceedance (Yes/No)	Comments
9	TSS	mg/L	Special Frequency 1*	0	-	-	-	-	50	-	No discharge
	Oil & Grease	mg/L		0	-	-	-	-	10	-	No discharge
	pH	pH		0	-	-	-	-	6.5-8.5	-	No discharge
10	TSS	mg/L	Special Frequency 1*	0	-	-	-	-	50	-	No discharge
	Oil & Grease	mg/L		0	-	-	-	-	10	-	No discharge
	pH	pH		0	-	-	-	-	6.5-8.5	-	No discharge

SUNNYSIDE COAL MINE – MONTHLY MONITORING SUMMARY

Table 3 – Monitoring (Noise – Limits Apply)

EPL ID	Date	Start Time	Measurement Period	Measured Levels – dB(A) L _{eq} 15min Day	Measured Levels – dB(A) L _{eq} 15min Evening	Limit	Wind speed/ direction	Compliant (Yes/No)	Comments
R2	-	-	-	-	-	35 dB(A) Leq (15 min)	-	-	No monitoring
R4	-	-	90min	-		35 dB(A) Leq (15 min)	-	-	No monitoring
		-	30min		-		-	-	No monitoring
	-	-	90min	-			-	-	No monitoring
		-	30min		-		-	-	No monitoring
	-	-	90min	-			-	-	No monitoring
		-	30min		-		-	-	No monitoring
R5	-	-	90min	-		35 dB(A) Leq (15 min)	-	-	No monitoring
		-	30min		-		-	-	No monitoring
	-	-	90min	-			-	-	No monitoring
		-	30min		-		-	-	No monitoring
	-	-	90min	-			-	-	No monitoring
		-	30min		-		-	-	No monitoring
R6	-	-	90min	-		35 dB(A) Leq (15 min)	-	-	No monitoring
		-	30min		-		-	-	No monitoring
	-	-	90min	-			-	-	No monitoring
		-	30min		-		-	-	No monitoring
	-	-	90min	-			-	-	No monitoring
		-	30min		-		-	-	No monitoring

Note Sunnyside mine does not operate during night hours, hence no measurements are taken

SUNNYSIDE COAL MINE – MONTHLY MONITORING SUMMARY

Table 4 – Monitoring (Blasts – Limits Apply)

Location	Parameter	Units of Measure	Frequency	No. of Blasts for the Month	Average Value	Max Value	100%ile Limit	(Potential) Non-compliance /breach
R1	Blast Noise	dB (Lin Peak)	Every Blast	0	-	-	120	No
	Blast Vibration	mm/s			-	-	10	No
R2	Blast Noise	dB (Lin Peak)	Every Blast	0	-	-	120	No
	Blast Vibration	mm/s			-	-	10	No
R4	Blast Noise	dB (Lin Peak)	Every Blast	0	-	-	120	No
	Blast Vibration	mm/s			-	-	10	No
R6	Blast Noise	dB (Lin Peak)	Every Blast	0	-	-	120	No
	Blast Vibration	mm/s			-	-	10	No

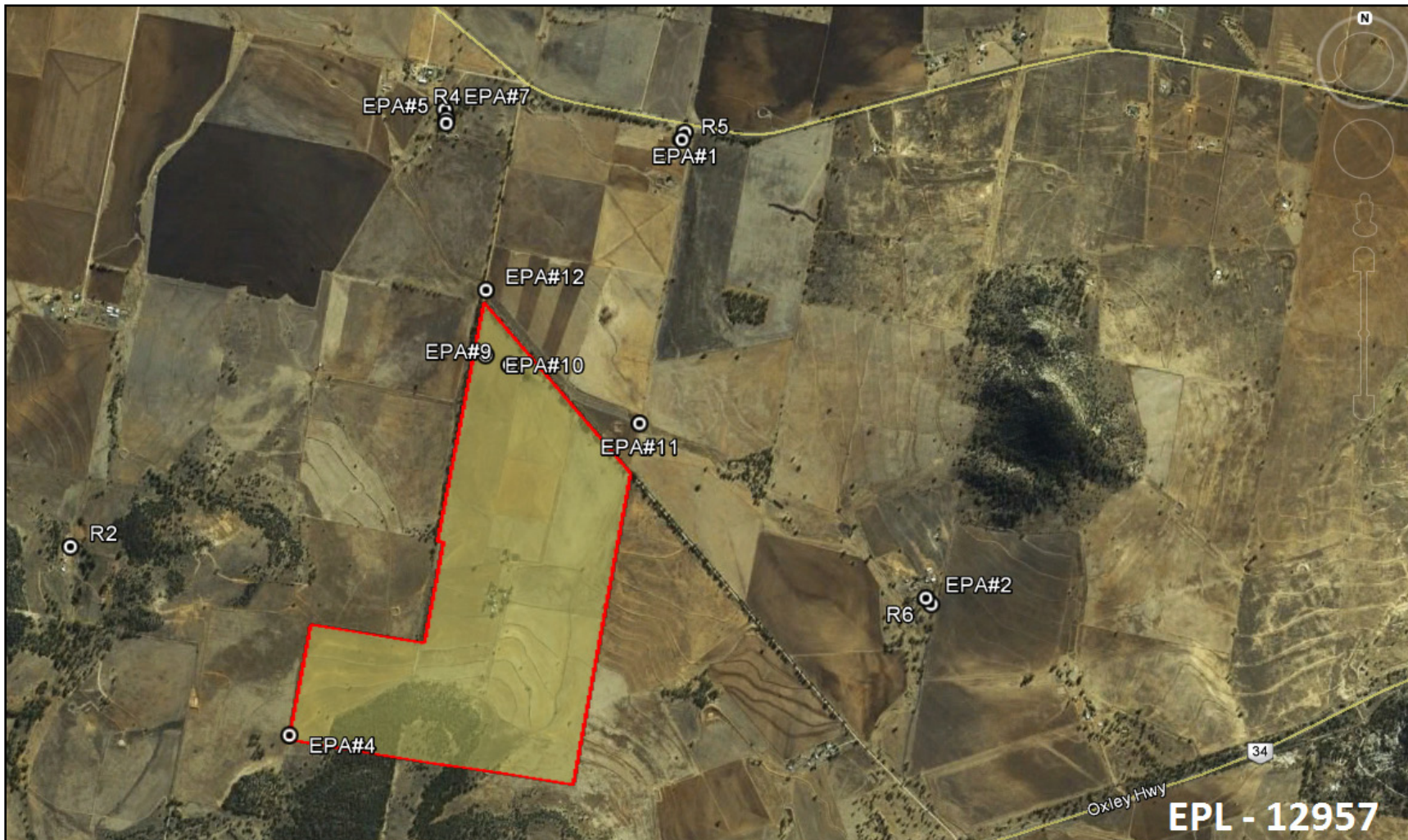
DNT – Indicates the blast did not trigger a result at the monitor.



WHITEHAVEN COAL

SUNNYSIDE COAL MINE – MONTHLY MONITORING SUMMARY

Figure 1 – EPL 12957 Monitoring Locations





SUNNYSIDE COAL MINE – MONTHLY MONITORING SUMMARY

Site Information

EPL No: 12957

EPA Website Link: <http://www.environment.nsw.gov.au/prpoeoapp/ViewPOEOLicence.aspx?DOCID=31541&SYSUID=1&LICID=12957>

Licensee: Namoi Mining Pty Ltd

Licensee Address: Sunnyside Coal Project, 259 Coocooboonah Lane, GUNNEDAH NSW 2380

EPL Monitoring Points: See Figure 1 below

Sampling Period: February 2013

Publication Date: 13th March 2013 (re-published 9th September 2014)

Table 1 - No Pollutant Limits Apply

EPL ID	Pollutant	Units of Measure	Monitoring Frequency	No. of Samples for the Month	Date(s) Sampled	Date Obtained	Min Value	Mean Value	Median Value	Max Value
1	Particulates-Deposited Matter	g/m ² /month	Continuous	1	21/2/2013	4/03/2013	0.9	0.9	0.9	0.9
2	Particulates-Deposited Matter	g/m ² /month	Continuous	1	21/2/2013	4/03/2013	2.5	2.5	2.5	2.5
4	Particulates-Deposited Matter	g/m ² /month	Continuous	1	21/2/2013	4/03/2013	3.0	3.0	3.0	3.0
5	Particulates-Deposited Matter	g/m ² /month	Continuous	1	21/2/2013	4/03/2013	1.4	1.4	1.4	1.4
6	Particulates-Deposited Matter	g/m ² /month	Continuous	1	21/2/2013	4/03/2013	4.1	4.1	4.1	4.1
7	PM ₁₀	µg/m ³	Every 6 days	4	2,8,14,20/2/2013	13/2/2013	2.9	12.8	14.3	19.8
9	Conductivity	µS/cm	Special Frequency 1*	0	-	-	-	-	-	-
	Total Organic Carbon	mg/L		0	-	-	-	-	-	-
10	Conductivity	µS/cm	Special Frequency 1*	0	-	-	-	-	-	-
	Total Organic Carbon	mg/L		0	-	-	-	-	-	-

SUNNYSIDE COAL MINE – MONTHLY MONITORING SUMMARY

EPL ID	Pollutant	Units of Measure	Monitoring Frequency	No. of Samples for the Month	Date(s) Sampled	Date Obtained	Min Value	Mean Value	Median Value	Max Value
11	TSS	mg/L	Special Frequency 2**	0	-	-	-	-	-	-
	Conductivity	µS/cm		0	-	-	-	-	-	-
	Oil & Grease	mg/L		0	-	-	-	-	-	-
	pH	pH		0	-	-	-	-	-	-
	Total Organic Carbon	mg/L		0	-	-	-	-	-	-
12	TSS	mg/L	Special Frequency 2**	0	-	-	-	-	-	-
	Conductivity	µS/cm		0	-	-	-	-	-	-
	Oil & Grease	mg/L		0	-	-	-	-	-	-
	pH	pH		0	-	-	-	-	-	-
	Total Organic Carbon	mg/L		0	-	-	-	-	-	-

* Special Frequency 1 means the collection of samples as soon as practicable after each discharge commences and in any case not more than 12 hours after each discharge commences.

** Special Frequency 2 means collection of samples quarterly (in the event of flow during the quarter) at a time when there is flow and as soon as practicable after each wet weather discharge from points 9 and 10 commences and in any case not more than 12 hours after each discharge commences.

Table 2 - Pollutant Limits Apply

EPL ID	Pollutant	Units of Measure	Monitoring Frequency	No. of Samples for the Month	Date Sampled	Date Obtained	Min Value	Max Value	100%ile Limit	Exceedance (Yes/No)	Comments
9	TSS	mg/L	Special Frequency 1*	0	-	-	-	-	50	-	No discharge
	Oil & Grease	mg/L		0	-	-	-	-	10	-	No discharge
	pH	pH		0	-	-	-	-	6.5-8.5	-	No discharge
10	TSS	mg/L	Special Frequency 1*	0	-	-	-	-	50	-	No discharge
	Oil & Grease	mg/L		0	-	-	-	-	10	-	No discharge
	pH	pH		0	-	-	-	-	6.5-8.5	-	No discharge

SUNNYSIDE COAL MINE – MONTHLY MONITORING SUMMARY

Table 3 – Monitoring (Noise – Limits Apply)

EPL ID	Date	Start Time	Measurement Period	Measured Levels – dB(A) L _{eq} 15min Day	Measured Levels – dB(A) L _{eq} 15min Evening	Limit	Wind speed/ direction	Compliant (Yes/No)	Comments
R2	-	-	-	-	-	35 dB(A) Leq (15 min)	-	-	No monitoring
R4	-	-	90min	-		35 dB(A) Leq (15 min)	-	-	No monitoring
		-	30min		-		-	-	No monitoring
	-	-	90min	-			-	-	No monitoring
		-	30min		-		-	-	No monitoring
	-	-	90min	-			-	-	No monitoring
		-	30min		-		-	-	No monitoring
R5	-	-	90min	-		35 dB(A) Leq (15 min)	-	-	No monitoring
		-	30min		-		-	-	No monitoring
	-	-	90min	-			-	-	No monitoring
		-	30min		-		-	-	No monitoring
	-	-	90min	-			-	-	No monitoring
		-	30min		-		-	-	No monitoring
R6	-	-	90min	-		35 dB(A) Leq (15 min)	-	-	No monitoring
		-	30min		-		-	-	No monitoring
	-	-	90min	-			-	-	No monitoring
		-	30min		-		-	-	No monitoring
	-	-	90min	-			-	-	No monitoring
		-	30min		-		-	-	No monitoring

Note Sunnyside mine does not operate during night hours, hence no measurements are taken

SUNNYSIDE COAL MINE – MONTHLY MONITORING SUMMARY

Table 4 – Monitoring (Blasts – Limits Apply)

Location	Parameter	Units of Measure	Frequency	No. of Blasts for the Month	Average Value	Max Value	100%ile Limit	(Potential) Non-compliance /breach
R1	Blast Noise	dB (Lin Peak)	Every Blast	0	-	-	120	No
	Blast Vibration	mm/s			-	-	10	No
R2	Blast Noise	dB (Lin Peak)	Every Blast	0	-	-	120	No
	Blast Vibration	mm/s			-	-	10	No
R4	Blast Noise	dB (Lin Peak)	Every Blast	0	-	-	120	No
	Blast Vibration	mm/s			-	-	10	No
R6	Blast Noise	dB (Lin Peak)	Every Blast	0	-	-	120	No
	Blast Vibration	mm/s			-	-	10	No

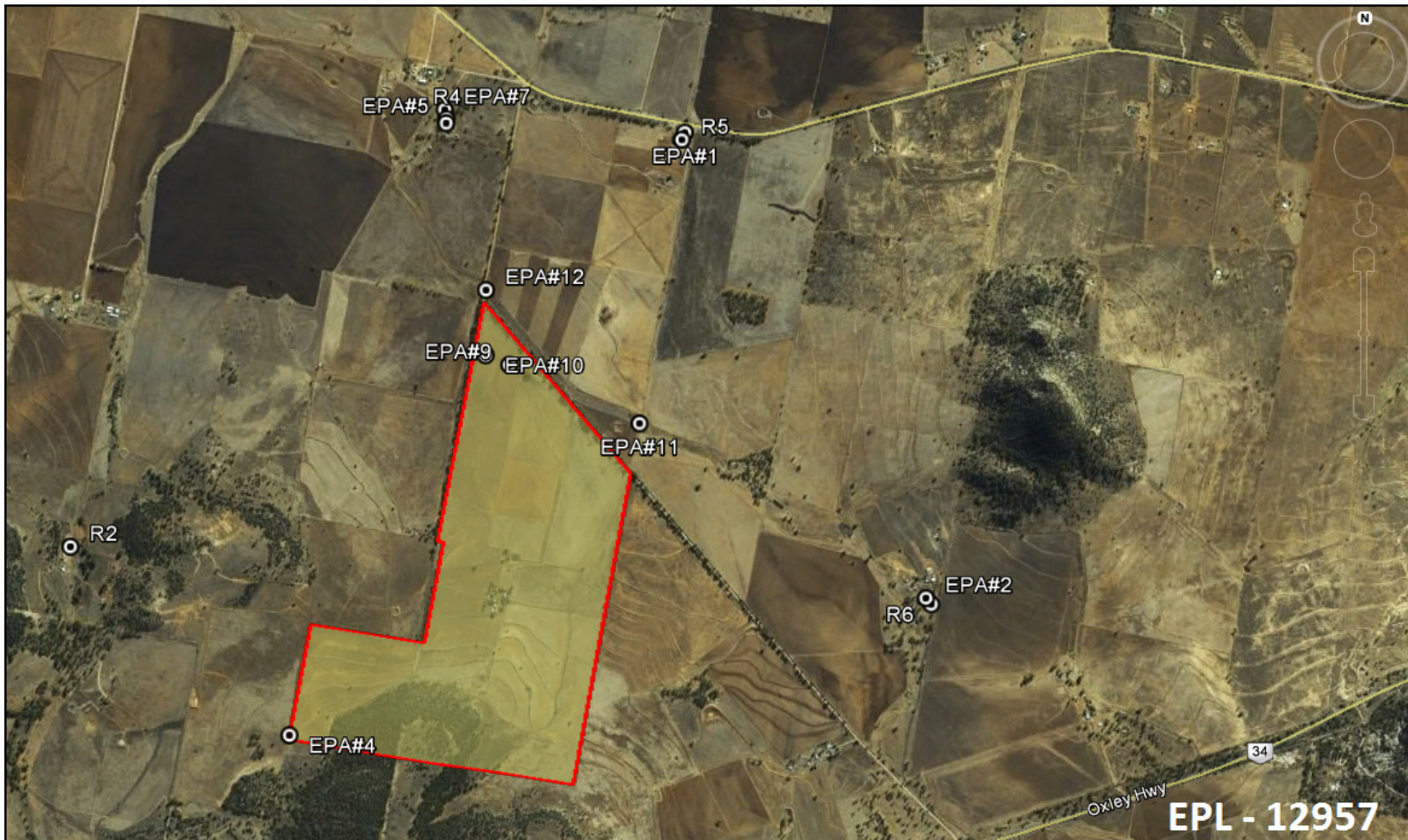
DNT – Indicates the blast did not trigger a result at the monitor.



WHITEHAVEN COAL

SUNNYSIDE COAL MINE – MONTHLY MONITORING SUMMARY

Figure 1 – EPL 12957 Monitoring Locations





SUNNYSIDE COAL MINE – MONTHLY MONITORING SUMMARY

Site Information

EPL No: 12957

EPA Website Link: <http://www.environment.nsw.gov.au/prpoeoapp/ViewPOEOLicence.aspx?DOCID=31541&SYSUID=1&LICID=12957>

Licensee: Namoi Mining Pty Ltd

Licensee Address: Sunnyside Coal Project, 259 Coocooboona Lane, GUNNEDAH NSW 2380

EPL Monitoring Points: See Figure 1 below

Sampling Period: March 2013

Publication Date: 11th April 2012 (re-published 9th September 2014)

Table 1 - No Pollutant Limits Apply

EPL ID	Pollutant	Units of Measure	Monitoring Frequency	No. of Samples for the Month	Date(s) Sampled	Date Obtained	Min Value	Mean Value	Median Value	Max Value
1	Particulates-Deposited Matter	g/m ² /month	Continuous	1	21/3/2013	3/4/2013	14.5	14.5	14.5	14.5
2	Particulates-Deposited Matter	g/m ² /month	Continuous	1	21/3/2013	3/4/2013	5.9	5.9	5.9	5.9
4	Particulates-Deposited Matter	g/m ² /month	Continuous	1	21/3/2013	3/4/2013	3.0	3.0	3.0	3.0
5	Particulates-Deposited Matter	g/m ² /month	Continuous	1	21/3/2013	3/4/2013	1.0	1.0	1.0	1.0
6	Particulates-Deposited Matter	g/m ² /month	Continuous	1	21/3/2013	3/4/2013	3.4	3.4	3.4	3.4
7	PM ₁₀	µg/m ³	Every 6 days	5	4,10,16,22,28/3/2013	10/4/2013	3.9	14	16.7	21.7
9	Conductivity	µS/cm	Special Frequency 1*	0	-	-	-	-	-	-
	Total Organic Carbon	mg/L		0	-	-	-	-	-	-
10	Conductivity	µS/cm	Special Frequency 1*	0	-	-	-	-	-	-
	Total Organic Carbon	mg/L		0	-	-	-	-	-	-

SUNNYSIDE COAL MINE – MONTHLY MONITORING SUMMARY

EPL ID	Pollutant	Units of Measure	Monitoring Frequency	No. of Samples for the Month	Date(s) Sampled	Date Obtained	Min Value	Mean Value	Median Value	Max Value
11	TSS	mg/L	Special Frequency 2**	0	-	-	-	-	-	-
	Conductivity	µS/cm		0	-	-	-	-	-	-
	Oil & Grease	mg/L		0	-	-	-	-	-	-
	pH	pH		0	-	-	-	-	-	-
	Total Organic Carbon	mg/L		0	-	-	-	-	-	-
12	TSS	mg/L	Special Frequency 2**	0	-	-	-	-	-	-
	Conductivity	µS/cm		0	-	-	-	-	-	-
	Oil & Grease	mg/L		0	-	-	-	-	-	-
	pH	pH		0	-	-	-	-	-	-
	Total Organic Carbon	mg/L		0	-	-	-	-	-	-

* Special Frequency 1 means the collection of samples as soon as practicable after each discharge commences and in any case not more than 12 hours after each discharge commences.

**Special Frequency 2 means collection of samples quarterly (in the event of flow during the quarter) at a time when there is flow and as soon as practicable after each wet weather discharge from points 9 and 10 commences and in any case not more than 12 hours after each discharge commences.

Table 2 - Pollutant Limits Apply

EPL ID	Pollutant	Units of Measure	Monitoring Frequency	No. of Samples for the Month	Date Sampled	Date Obtained	Min Value	Max Value	100%ile Limit	Exceedance (Yes/No)	Comments
9	TSS	mg/L	Special Frequency 1*	0	-	-	-	-	50	-	No discharge
	Oil & Grease	mg/L		0	-	-	-	-	10	-	No discharge
	pH	pH		0	-	-	-	-	6.5-8.5	-	No discharge
10	TSS	mg/L	Special Frequency 1*	0	-	-	-	-	50	-	No discharge
	Oil & Grease	mg/L		0	-	-	-	-	10	-	No discharge
	pH	pH		0	-	-	-	-	6.5-8.5	-	No discharge

SUNNYSIDE COAL MINE – MONTHLY MONITORING SUMMARY

Table 3 – Monitoring (Noise – Limits Apply)

EPL ID	Date	Start Time	Measurement Period	Measured Levels – dB(A) L _{eq} 15min Day	Measured Levels – dB(A) L _{eq} 15min Evening	Limit	Wind speed/ direction	Compliant (Yes/No)	Comments
R2	-	-	-	-	-	35 dB(A) Leq (15 min)	-	-	No monitoring
R4	-	-	90min	-		35 dB(A) Leq (15 min)	-	-	No monitoring
		-	30min		-		-	-	No monitoring
	-	-	90min	-			-	-	No monitoring
		-	30min		-		-	-	No monitoring
	-	-	90min	-			-	-	No monitoring
		-	30min		-		-	-	No monitoring
R5	-	-	90min	-		35 dB(A) Leq (15 min)	-	-	No monitoring
		-	30min		-		-	-	No monitoring
	-	-	90min	-			-	-	No monitoring
		-	30min		-		-	-	No monitoring
	-	-	90min	-			-	-	No monitoring
		-	30min		-		-	-	No monitoring
R6	-	-	90min	-		35 dB(A) Leq (15 min)	-	-	No monitoring
		-	30min		-		-	-	No monitoring
	-	-	90min	-			-	-	No monitoring
		-	30min		-		-	-	No monitoring
	-	-	90min	-			-	-	No monitoring
		-	30min		-		-	-	No monitoring

Note Sunnyside mine does not operate during night hours, hence no measurements are taken

SUNNYSIDE COAL MINE – MONTHLY MONITORING SUMMARY

Table 4 – Monitoring (Blasts – Limits Apply)

Location	Parameter	Units of Measure	Frequency	No. of Blasts for the Month	Average Value	Max Value	100%ile Limit	(Potential) Non-compliance /breach
R1	Blast Noise	dB (Lin Peak)	Every Blast	0	-	-	120	No
	Blast Vibration	mm/s			-	-	10	No
R2	Blast Noise	dB (Lin Peak)	Every Blast	0	-	-	120	No
	Blast Vibration	mm/s			-	-	10	No
R4	Blast Noise	dB (Lin Peak)	Every Blast	0	-	-	120	No
	Blast Vibration	mm/s			-	-	10	No
R6	Blast Noise	dB (Lin Peak)	Every Blast	0	-	-	120	No
	Blast Vibration	mm/s			-	-	10	No

DNT – Indicates the blast did not trigger a result at the monitor.



WHITEHAVEN COAL

SUNNYSIDE COAL MINE – MONTHLY MONITORING SUMMARY

Figure 1 – EPL 12957 Monitoring Locations





SUNNYSIDE COAL MINE – MONTHLY MONITORING SUMMARY

Site Information

EPL No: 12957

EPA Website Link: <http://www.environment.nsw.gov.au/prpoeoapp/ViewPOEOLicence.aspx?DOCID=32488&SYSUID=1&LICID=12957>

Licensee: Namoi Mining Pty Ltd

Licensee Address: Sunnyside Coal Project, 259 Coocooboona Lane, GUNNEDAH NSW 2380

EPL Monitoring Points: See Figure 1 below

Sampling Period: April 2013

Publication Date: 10th May 2013 (re-published 9th September 2014)

Table 1 - No Pollutant Limits Apply

EPL ID	Pollutant	Units of Measure	Monitoring Frequency	No. of Samples for the Month	Date(s) Sampled	Date Obtained	Min Value	Mean Value	Median Value	Max Value
1	Particulates-Deposited Matter	g/m ² /month	Continuous	1	17/4/2013	26/4/2013	0.4	0.4	0.4	0.4
2	Particulates-Deposited Matter	g/m ² /month	Continuous	1	17/4/2013	26/4/2013	0.5	0.5	0.5	0.5
4	Particulates-Deposited Matter	g/m ² /month	Continuous	1	17/4/2013	26/4/2013	0.4	0.4	0.4	0.4
5	Particulates-Deposited Matter	g/m ² /month	Continuous	1	17/4/2013	26/4/2013	0.4	0.4	0.4	0.4
6	Particulates-Deposited Matter	g/m ² /month	Continuous	1	17/4/2013	26/4/2013	2.8	2.8	2.8	2.8
7	PM ₁₀	µg/m ³	Every 6 days	5	3,9,15,21,27/4/2013	7/5/2013	0.1	17.84	21.8	27.7
9	Conductivity	µS/cm	Special Frequency 1*	0	-	-	-	-	-	-
	Total organic carbon	mg/L		0	-	-	-	-	-	-
10	Conductivity	µS/cm	Special Frequency 1*	0	-	-	-	-	-	-
	Total organic carbon	mg/L		0	-	-	-	-	-	-

SUNNYSIDE COAL MINE – MONTHLY MONITORING SUMMARY

EPL ID	Pollutant	Units of Measure	Monitoring Frequency	No. of Samples for the Month	Date(s) Sampled	Date Obtained	Min Value	Mean Value	Median Value	Max Value
11	TSS	mg/L	Special Frequency 2**	0	-	-	-	-	-	-
	Conductivity	µS/cm		0	-	-	-	-	-	-
	Oil & Grease	mg/L		0	-	-	-	-	-	-
	pH	pH		0	-	-	-	-	-	-
	Total organic carbon	mg/L		0	-	-	-	-	-	-
12	TSS	mg/L	Special Frequency 2**	0	-	-	-	-	-	-
	Conductivity	µS/cm		0	-	-	-	-	-	-
	Oil & Grease	mg/L		0	-	-	-	-	-	-
	pH	pH		0	-	-	-	-	-	-
	Total organic carbon	mg/L		0	-	-	-	-	-	-

* Special Frequency 1 means the collection of samples as soon as practicable after each discharge commences and in any case not more than 12 hours after each discharge commences.

** Special Frequency 2 means collection of samples quarterly (in the event of flow during the quarter) at a time when there is flow and as soon as practicable after each wet weather discharge from points 9 and 10 commences and in any case not more than 12 hours after each discharge commences.

Table 2 - Pollutant Limits Apply

EPL ID	Pollutant	Units of Measure	Monitoring Frequency	No. of Samples for the Month	Date Sampled	Date Obtained	Min Value	Max Value	100%ile Limit	Exceedance (Yes/No)	Comments
9	TSS	mg/L	Special Frequency 1*	0	-	-	-	-	50	-	No discharge
	Oil & Grease	mg/L		0	-	-	-	-	10	-	No discharge
	pH	pH		0	-	-	-	-	6.5-8.5	-	No discharge
10	TSS	mg/L	Special Frequency 1*	0	-	-	-	-	50	-	No discharge
	Oil & Grease	mg/L		0	-	-	-	-	10	-	No discharge
	pH	pH		0	-	-	-	-	6.5-8.5	-	No discharge

SUNNYSIDE COAL MINE – MONTHLY MONITORING SUMMARY

Table 3 – Monitoring (Blasts – Limits Apply)

Location	Parameter	Units of Measure	Frequency	No. of Blasts for the Month	Average Value	Max Value	100%ile Limit	(Potential) Non-compliance /breach
R1	Blast Noise	dB (Lin Peak)	Every Blast	0	-	-	120	No blasting taking place
	Blast Vibration	mm/s			-	-	10	No blasting taking place
R2	Blast Noise	dB (Lin Peak)	Every Blast	0	-	-	120	No blasting taking place
	Blast Vibration	mm/s			-	-	10	No blasting taking place
R4	Blast Noise	dB (Lin Peak)	Every Blast	0	-	-	120	No blasting taking place
	Blast Vibration	mm/s			-	-	10	No blasting taking place
R6	Blast Noise	dB (Lin Peak)	Every Blast	0	-	-	120	No blasting taking place
	Blast Vibration	mm/s			-	-	10	No blasting taking place

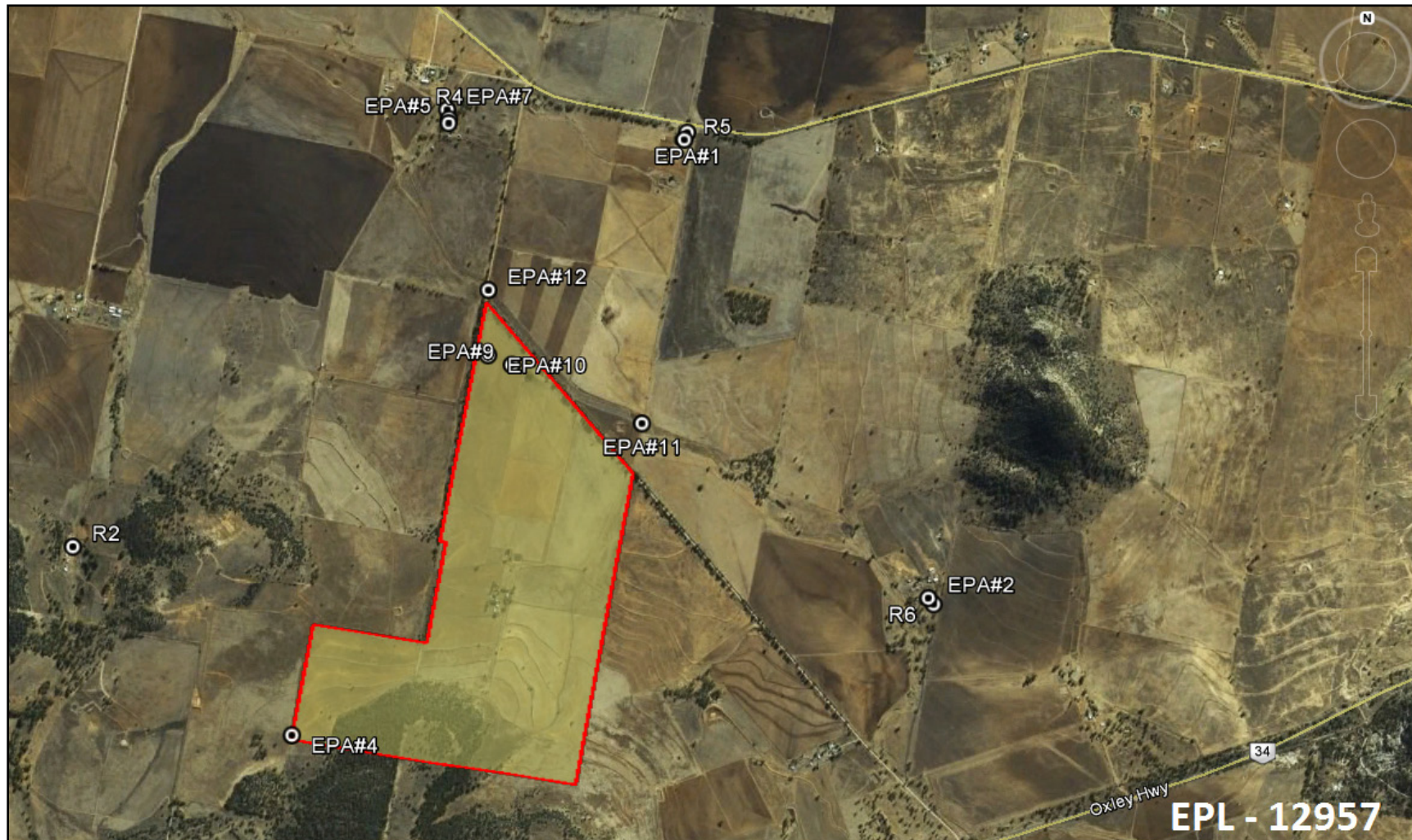
DNT – Indicates the blast did not trigger a result at the monitor.



WHITEHAVEN COAL

SUNNYSIDE COAL MINE – MONTHLY MONITORING SUMMARY

Figure 1 – EPL 12957 Monitoring Locations





SUNNYSIDE COAL MINE – MONTHLY MONITORING SUMMARY

Site Information

EPL No: 12957

EPA Website Link: <http://www.environment.nsw.gov.au/prpoeoapp/ViewPOEOLicence.aspx?DOCID=32488&SYSUID=1&LICID=12957>

Licensee: Namoi Mining Pty Ltd

Licensee Address: Sunnyside Coal Project, 259 Coocooboonah Lane, GUNNEDAH NSW 2380

EPL Monitoring Points: See Figure 1 below

Sampling Period: May 2013

Publication Date: 21st June 2013 (re-published 9th September 2014)

Table 1 - No Pollutant Limits Apply

EPL ID	Pollutant	Units of Measure	Monitoring Frequency	No. of Samples for the Month	Date(s) Sampled	Date Obtained	Min Value	Mean Value	Median Value	Max Value
1	Particulates-Deposited Matter	g/m ² /month	Continuous	1	20/5/2013	24/5/2013	0.9	0.9	0.9	0.9
2	Particulates-Deposited Matter	g/m ² /month	Continuous	1	20/5/2013	24/5/2013	0.8	0.8	0.8	0.8
4	Particulates-Deposited Matter	g/m ² /month	Continuous	1	20/5/2013	24/5/2013	2.3	2.3	2.3	2.3
5	Particulates-Deposited Matter	g/m ² /month	Continuous	1	20/5/2013	24/5/2013	1.2	1.2	1.2	1.2
6	Particulates-Deposited Matter	g/m ² /month	Continuous	1	20/5/2013	24/5/2013	1.2	1.2	1.2	1.2
7	PM ₁₀	µg/m ³	Every 6 days	5	3,9,15,21,27/5/2013	11/6/2013	3.0	14.76	11.6	33.9
9	Conductivity	µS/cm	Special Frequency 1*	0	-	-	-	-	-	-
	Total organic carbon	mg/L		0	-	-	-	-	-	-
10	Conductivity	µS/cm	Special Frequency 1*	0	-	-	-	-	-	-
	Total organic carbon	mg/L		0	-	-	-	-	-	-

SUNNYSIDE COAL MINE – MONTHLY MONITORING SUMMARY

EPL ID	Pollutant	Units of Measure	Monitoring Frequency	No. of Samples for the Month	Date(s) Sampled	Date Obtained	Min Value	Mean Value	Median Value	Max Value
11	TSS	mg/L	Special Frequency 2**	0	-	-	-	-	-	-
	Conductivity	µS/cm		0	-	-	-	-	-	-
	Oil & Grease	mg/L		0	-	-	-	-	-	-
	pH	pH		0	-	-	-	-	-	-
	Total organic carbon	mg/L		0	-	-	-	-	-	-
12	TSS	mg/L	Special Frequency 2**	0	-	-	-	-	-	-
	Conductivity	µS/cm		0	-	-	-	-	-	-
	Oil & Grease	mg/L		0	-	-	-	-	-	-
	pH	pH		0	-	-	-	-	-	-
	Total organic carbon	mg/L		0	-	-	-	-	-	-

* Special Frequency 1 means the collection of samples as soon as practicable after each discharge commences and in any case not more than 12 hours after each discharge commences.

** Special Frequency 2 means collection of samples quarterly (in the event of flow during the quarter) at a time when there is flow and as soon as practicable after each wet weather discharge from points 9 and 10 commences and in any case not more than 12 hours after each discharge commences.

SUNNYSIDE COAL MINE – MONTHLY MONITORING SUMMARY

Table 2 - Pollutant Limits Apply

EPL ID	Pollutant	Units of Measure	Monitoring Frequency	No. of Samples for the Month	Date Sampled	Date Obtained	Min Value	Max Value	100%ile Limit	Exceedance (Yes/No)	Comments
9	TSS	mg/L	Special Frequency 1*	0	-	-	-	-	50	-	No discharge
	Oil & Grease	mg/L		0	-	-	-	-	10	-	No discharge
	pH	pH		0	-	-	-	-	6.5-8.5	-	No discharge
10	TSS	mg/L	Special Frequency 1*	0	-	-	-	-	50	-	No discharge
	Oil & Grease	mg/L		0	-	-	-	-	10	-	No discharge
	pH	pH		0	-	-	-	-	6.5-8.5	-	No discharge

Table 3 – Monitoring (Blasts – Limits Apply)

Location	Parameter	Units of Measure	Frequency	No. of Blasts for the Month	Average Value	Max Value	100%ile Limit	(Potential) Non-compliance /breach
R1	Blast Noise	dB (Lin Peak)	Every Blast	0	-	-	120	No blasting taking place
	Blast Vibration	mm/s			-	-	10	No blasting taking place
R2	Blast Noise	dB (Lin Peak)	Every Blast	0	-	-	120	No blasting taking place
	Blast Vibration	mm/s			-	-	10	No blasting taking place
R4	Blast Noise	dB (Lin Peak)	Every Blast	0	-	-	120	No blasting taking place
	Blast Vibration	mm/s			-	-	10	No blasting taking place
R6	Blast Noise	dB (Lin Peak)	Every Blast	0	-	-	120	No blasting taking place
	Blast Vibration	mm/s			-	-	10	No blasting taking place

DNT – Indicates the blast did not trigger a result at the monitor.



WHITEHAVEN COAL

SUNNYSIDE COAL MINE – MONTHLY MONITORING SUMMARY

Figure 1 – EPL 12957 Monitoring Locations





SUNNYSIDE COAL MINE – MONTHLY MONITORING SUMMARY

Site Information

EPL No: 12957

EPA Website Link: <http://www.environment.nsw.gov.au/prpoeoapp/ViewPOEOLicence.aspx?DOCID=32488&SYSUID=1&LICID=12957>

Licensee: Namoi Mining Pty Ltd

Licensee Address: Sunnyside Coal Project, 259 Coocooboonah Lane, GUNNEDAH NSW 2380

EPL Monitoring Points: See Figure 1 below

Sampling Period: June 2013

Publication Date: 19th July 2013 (re-published 9th September 2014)

Table 1 - No Pollutant Limits Apply

EPL ID	Pollutant	Units of Measure	Monitoring Frequency	No. of Samples for the Month	Date(s) Sampled	Date Obtained	Min Value	Mean Value	Median Value	Max Value
1	Particulates-Deposited Matter	g/m ² /month	Continuous	1	19/6/2013	28/6/2013	0.2	0.2	0.2	0.2
2	Particulates-Deposited Matter	g/m ² /month	Continuous	1	19/6/2013	28/6/2013	1.5	1.5	1.5	1.5
4	Particulates-Deposited Matter	g/m ² /month	Continuous	1	19/6/2013	28/6/2013	1.0	1.0	1.0	1.0
5	Particulates-Deposited Matter	g/m ² /month	Continuous	1	19/6/2013	28/6/2013	0.4	0.4	0.4	0.4
6	Particulates-Deposited Matter	g/m ² /month	Continuous	1	19/6/2013	28/6/2013	1.3	1.3	1.3	1.3
7	PM ₁₀	µg/m ³	Every 6 days	4	2,14,20,26/6/2013	9/7/2013	0.1	2.0	1.4	5.4
9	Conductivity	µS/cm	Special Frequency 1*	0	-	-	-	-	-	-
	Total organic carbon	mg/L		0	-	-	-	-	-	-
10	Conductivity	µS/cm	Special Frequency 1*	0	-	-	-	-	-	-
	Total organic carbon	mg/L		0	-	-	-	-	-	-

SUNNYSIDE COAL MINE – MONTHLY MONITORING SUMMARY

EPL ID	Pollutant	Units of Measure	Monitoring Frequency	No. of Samples for the Month	Date(s) Sampled	Date Obtained	Min Value	Mean Value	Median Value	Max Value
11	TSS	mg/L	Special Frequency 2**	0	-	-	-	-	-	-
	Conductivity	µS/cm		0	-	-	-	-	-	-
	Oil & Grease	mg/L		0	-	-	-	-	-	-
	pH	pH		0	-	-	-	-	-	-
	Total organic carbon	mg/L		0	-	-	-	-	-	-
12	TSS	mg/L	Special Frequency 2**	0	-	-	-	-	-	-
	Conductivity	µS/cm		0	-	-	-	-	-	-
	Oil & Grease	mg/L		0	-	-	-	-	-	-
	pH	pH		0	-	-	-	-	-	-
	Total organic carbon	mg/L		0	-	-	-	-	-	-

* Special Frequency 1 means the collection of samples as soon as practicable after each discharge commences and in any case not more than 12 hours after each discharge commences.

** Special Frequency 2 means collection of samples quarterly (in the event of flow during the quarter) at a time when there is flow and as soon as practicable after each wet weather discharge from points 9 and 10 commences and in any case not more than 12 hours after each discharge commences.

Table 2 - Pollutant Limits Apply

EPL ID	Pollutant	Units of Measure	Monitoring Frequency	No. of Samples for the Month	Date Sampled	Date Obtained	Min Value	Max Value	100%ile Limit	Exceedance (Yes/No)	Comments
9	TSS	mg/L	Special Frequency 1*	0	-	-	-	-	50	-	No discharge
	Oil & Grease	mg/L		0	-	-	-	-	10	-	No discharge
	pH	pH		0	-	-	-	-	6.5-8.5	-	No discharge
10	TSS	mg/L	Special Frequency 1*	0	-	-	-	-	50	-	No discharge
	Oil & Grease	mg/L		0	-	-	-	-	10	-	No discharge
	pH	pH		0	-	-	-	-	6.5-8.5	-	No discharge

SUNNYSIDE COAL MINE – MONTHLY MONITORING SUMMARY

Table 3 – Monitoring (Blasts – Limits Apply)

Location	Parameter	Units of Measure	Frequency	No. of Blasts for the Month	Average Value	Max Value	100%ile Limit	(Potential) Non-compliance /breach
R1	Blast Noise	dB (Lin Peak)	Every Blast	0	-	-	120	No blasting taking place
	Blast Vibration	mm/s			-	-	10	No blasting taking place
R2	Blast Noise	dB (Lin Peak)	Every Blast	0	-	-	120	No blasting taking place
	Blast Vibration	mm/s			-	-	10	No blasting taking place
R4	Blast Noise	dB (Lin Peak)	Every Blast	0	-	-	120	No blasting taking place
	Blast Vibration	mm/s			-	-	10	No blasting taking place
R6	Blast Noise	dB (Lin Peak)	Every Blast	0	-	-	120	No blasting taking place
	Blast Vibration	mm/s			-	-	10	No blasting taking place

DNT – Indicates the blast did not trigger a result at the monitor.



WHITEHAVEN COAL

SUNNYSIDE COAL MINE – MONTHLY MONITORING SUMMARY

Figure 1 – EPL 12957 Monitoring Locations





SUNNYSIDE COAL MINE – MONTHLY MONITORING SUMMARY

Site Information

EPL No: 12957

EPA Website Link: <http://www.environment.nsw.gov.au/prpoeoapp/ViewPOEOLicence.aspx?DOCID=32488&SYSUID=1&LICID=12957>

Licensee: Namoi Mining Pty Ltd

Licensee Address: Sunnyside Coal Project, 259 Coocooboonah Lane, GUNNEDAH NSW 2380

EPL Monitoring Points: See Figure 1 below

Sampling Period: July 2013

Publication Date: 9th August 2013 (re-published 9th September 2014)

Table 1 - No Pollutant Limits Apply

EPL ID	Pollutant	Units of Measure	Monitoring Frequency	No. of Samples for the Month	Date(s) Sampled	Date Obtained	Min Value	Mean Value	Median Value	Max Value
1	Particulates-Deposited Matter	g/m ² /month	Continuous	1	18/7/2013	26/7/2013	0.2	0.2	0.2	0.2
2	Particulates-Deposited Matter	g/m ² /month	Continuous	1	18/7/2013	26/7/2013	0.2	0.2	0.2	0.2
4	Particulates-Deposited Matter	g/m ² /month	Continuous	1	18/7/2013	26/7/2013	0.2	0.2	0.2	0.2
5	Particulates-Deposited Matter	g/m ² /month	Continuous	1	18/7/2013	26/7/2013	0.2	0.2	0.2	0.2
6	Particulates-Deposited Matter	g/m ² /month	Continuous	1	18/7/2013	26/7/2013	0.4	0.4	0.4	0.4
7	PM ₁₀	µg/m ³	Every 6 days	5	2,8,14,20,26/7/2013	9/8/2013	1.4	4.8	5.2	7.9
9	Conductivity	µS/cm	Special Frequency 1*	0	-	-	-	-	-	-
	Total organic carbon	mg/L		0	-	-	-	-	-	-
10	Conductivity	µS/cm	Special Frequency 1*	0	-	-	-	-	-	-
	Total organic carbon	mg/L		0	-	-	-	-	-	-

SUNNYSIDE COAL MINE – MONTHLY MONITORING SUMMARY

EPL ID	Pollutant	Units of Measure	Monitoring Frequency	No. of Samples for the Month	Date(s) Sampled	Date Obtained	Min Value	Mean Value	Median Value	Max Value
11	TSS	mg/L	Special Frequency 2**	0	-	-	-	-	-	-
	Conductivity	µS/cm		0	-	-	-	-	-	-
	Oil & Grease	mg/L		0	-	-	-	-	-	-
	pH	pH		0	-	-	-	-	-	-
	Total organic carbon	mg/L								
12	TSS	mg/L	Special Frequency 2**	0	-	-	-	-	-	-
	Conductivity	µS/cm		0	-	-	-	-	-	-
	Oil & Grease	mg/L		0	-	-	-	-	-	-
	pH	pH		0	-	-	-	-	-	-
	Total organic carbon	mg/L								

* Special Frequency 1 means the collection of samples as soon as practicable after each discharge commences and in any case not more than 12 hours after each discharge commences.

** Special Frequency 2 means collection of samples quarterly (in the event of flow during the quarter) at a time when there is flow and as soon as practicable after each wet weather discharge from points 9 and 10 commences and in any case not more than 12 hours after each discharge commences.

Table 2 - Pollutant Limits Apply

EPL ID	Pollutant	Units of Measure	Monitoring Frequency	No. of Samples for the Month	Date Sampled	Date Obtained	Min Value	Max Value	100%ile Limit	Exceedance (Yes/No)	Comments
9	TSS	mg/L	Special Frequency 1*	0	-	-	-	-	50	-	No discharge
	Oil & Grease	mg/L		0	-	-	-	-	10	-	No discharge
	pH	pH		0	-	-	-	-	6.5-8.5	-	No discharge
10	TSS	mg/L	Special Frequency 1*	0	-	-	-	-	50	-	No discharge
	Oil & Grease	mg/L		0	-	-	-	-	10	-	No discharge
	pH	pH		0	-	-	-	-	6.5-8.5	-	No discharge

SUNNYSIDE COAL MINE – MONTHLY MONITORING SUMMARY

Table 3 – Monitoring (Blasts – Limits Apply)

Location	Parameter	Units of Measure	Frequency	No. of Blasts for the Month	Average Value	Max Value	100%ile Limit	(Potential) Non-compliance /breach
R1	Blast Noise	dB (Lin Peak)	Every Blast	0	-	-	120	No blasting taking place
	Blast Vibration	mm/s			-	-	10	No blasting taking place
R2	Blast Noise	dB (Lin Peak)	Every Blast	0	-	-	120	No blasting taking place
	Blast Vibration	mm/s			-	-	10	No blasting taking place
R4	Blast Noise	dB (Lin Peak)	Every Blast	0	-	-	120	No blasting taking place
	Blast Vibration	mm/s			-	-	10	No blasting taking place
R6	Blast Noise	dB (Lin Peak)	Every Blast	0	-	-	120	No blasting taking place
	Blast Vibration	mm/s			-	-	10	No blasting taking place

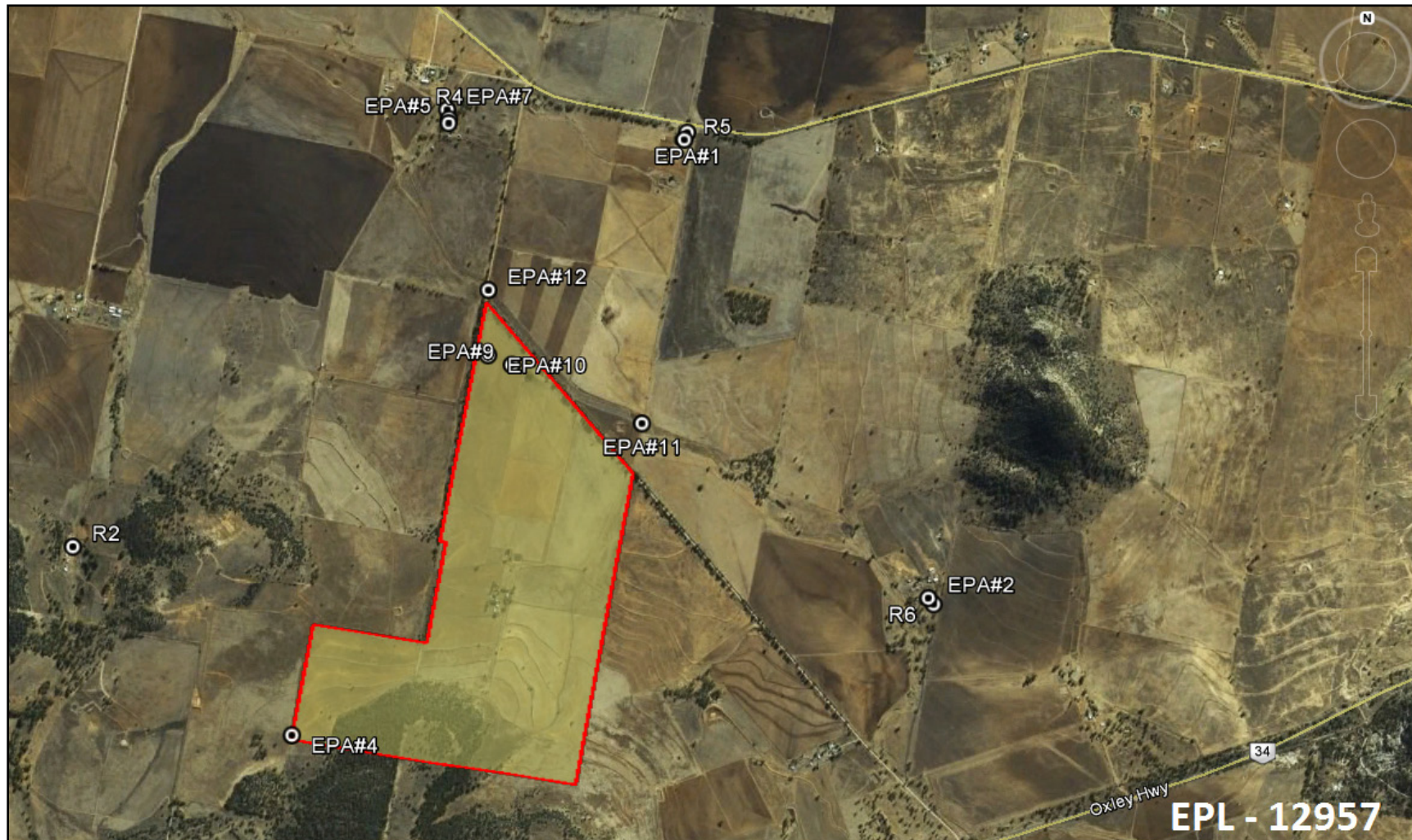
DNT – Indicates the blast did not trigger a result at the monitor.



WHITEHAVEN COAL

SUNNYSIDE COAL MINE – MONTHLY MONITORING SUMMARY

Figure 1 – EPL 12957 Monitoring Locations





SUNNYSIDE COAL MINE – MONTHLY MONITORING SUMMARY

Site Information

EPL No: 12957

EPA Website Link: <http://www.environment.nsw.gov.au/prpoeoapp/ViewPOEOLicence.aspx?DOCID=32488&SYSUID=1&LICID=12957>

Licensee: Namoi Mining Pty Ltd

Licensee Address: Sunnyside Coal Project, 259 Coocooboonah Lane, GUNNEDAH NSW 2380

EPL Monitoring Points: See Figure 1 below

Sampling Period: August 2013

Publication Date: 17th September 2013 (re-published 9th September 2014)

Table 1 - No Pollutant Limits Apply

EPL ID	Pollutant	Units of Measure	Monitoring Frequency	No. of Samples for the Month	Date(s) Sampled	Date Obtained	Min Value	Mean Value	Median Value	Max Value
1	Particulates-Deposited Matter	g/m ² /month	Continuous	1	19/8/2013	28/8/2013	0.4	0.4	0.4	0.4
2	Particulates-Deposited Matter	g/m ² /month	Continuous	1	19/8/2013	28/8/2013	0.3	0.3	0.3	0.3
4	Particulates-Deposited Matter	g/m ² /month	Continuous	1	20/8/2013	28/8/2013	0.4	0.4	0.4	0.4
5	Particulates-Deposited Matter	g/m ² /month	Continuous	1	19/8/2013	28/8/2013	0.6	0.6	0.6	0.6
6	Particulates-Deposited Matter	g/m ² /month	Continuous	1	19/8/2013	28/8/2013	0.8	0.8	0.8	0.8
7	PM ₁₀	µg/m ³	Every 6 days	5	1,7,13,19,31/8/2013	11/9/2013	4.6	10.7	13.2	14.8
9	Conductivity	µS/cm	Special Frequency 1*	0	-	-	-	-	-	-
	Total organic carbon	mg/L		0	-	-	-	-	-	-
10	Conductivity	µS/cm	Special Frequency 1*	0	-	-	-	-	-	-
	Total organic carbon	mg/L		0	-	-	-	-	-	-

SUNNYSIDE COAL MINE – MONTHLY MONITORING SUMMARY

EPL ID	Pollutant	Units of Measure	Monitoring Frequency	No. of Samples for the Month	Date(s) Sampled	Date Obtained	Min Value	Mean Value	Median Value	Max Value
11	TSS	mg/L	Special Frequency 2**	0	-	-	-	-	-	-
	Conductivity	µS/cm		0	-	-	-	-	-	-
	Oil & Grease	mg/L		0	-	-	-	-	-	-
	pH	pH		0	-	-	-	-	-	-
	Total Organic Carbon	mg/L		0	-	-	-	-	-	-
12	TSS	mg/L	Special Frequency 2**	0	-	-	-	-	-	-
	Conductivity	µS/cm		0	-	-	-	-	-	-
	Oil & Grease	mg/L		0	-	-	-	-	-	-
	pH	pH		0	-	-	-	-	-	-
	Total Organic Carbon	mg/L		0	-	-	-	-	-	-

* Special Frequency 1 means the collection of samples as soon as practicable after each discharge commences and in any case not more than 12 hours after each discharge commences.

** Special Frequency 2 means collection of samples quarterly (in the event of flow during the quarter) at a time when there is flow and as soon as practicable after each wet weather discharge from points 9 and 10 commences and in any case not more than 12 hours after each discharge commences.

Table 2 - Pollutant Limits Apply

EPL ID	Pollutant	Units of Measure	Monitoring Frequency	No. of Samples for the Month	Date Sampled	Date Obtained	Min Value	Max Value	100%ile Limit	Exceedance (Yes/No)	Comments
9	TSS	mg/L	Special Frequency 1*	0	-	-	-	-	50	-	No discharge
	Oil & Grease	mg/L		0	-	-	-	-	10	-	No discharge
	pH	pH		0	-	-	-	-	6.5-8.5	-	No discharge
10	TSS	mg/L	Special Frequency 1*	0	-	-	-	-	50	-	No discharge
	Oil & Grease	mg/L		0	-	-	-	-	10	-	No discharge
	pH	pH		0	-	-	-	-	6.5-8.5	-	No discharge

SUNNYSIDE COAL MINE – MONTHLY MONITORING SUMMARY

Table 3 – Monitoring (Blasts – Limits Apply)

Location	Parameter	Units of Measure	Frequency	No. of Blasts for the Month	Average Value	Max Value	100%ile Limit	(Potential) Non-compliance /breach
R1	Blast Noise	dB (Lin Peak)	Every Blast	0	-	-	120	No blasting taking place
	Blast Vibration	mm/s			-	-	10	No blasting taking place
R2	Blast Noise	dB (Lin Peak)	Every Blast	0	-	-	120	No blasting taking place
	Blast Vibration	mm/s			-	-	10	No blasting taking place
R4	Blast Noise	dB (Lin Peak)	Every Blast	0	-	-	120	No blasting taking place
	Blast Vibration	mm/s			-	-	10	No blasting taking place
R6	Blast Noise	dB (Lin Peak)	Every Blast	0	-	-	120	No blasting taking place
	Blast Vibration	mm/s			-	-	10	No blasting taking place

DNT – Indicates the blast did not trigger a result at the monitor.



WHITEHAVEN COAL

SUNNYSIDE COAL MINE – MONTHLY MONITORING SUMMARY

Figure 1 – EPL 12957 Monitoring Locations





SUNNYSIDE COAL MINE – MONTHLY MONITORING SUMMARY

Site Information

EPL No: 12957

EPA Website Link: <http://www.epa.nsw.gov.au/prpoeoapp/ViewPOEOLicence.aspx?DOCID=32488&SYSUID=1&LICID=12957>

Licensee: Namoi Mining Pty Ltd

Licensee Address: Sunnyside Coal Project, 259 Coocooboona Lane, GUNNEDAH NSW 2380

EPL Monitoring Points: See Figure 1 below

Sampling Period: September 2013

Publication Date: 11th October 2013 (re-published 9th September 2014)

Table 1 - No Pollutant Limits Apply

EPL ID	Pollutant	Units of Measure	Monitoring Frequency	No. of Samples for the Month	Date(s) Sampled	Date Obtained	Min Value	Mean Value	Median Value	Max Value
1	Particulates-Deposited Matter	g/m ² /month	Continuous	1	18/9/2013	24/9/2013	0.5	0.5	0.5	0.5
2	Particulates-Deposited Matter	g/m ² /month	Continuous	1	18/9/2013	24/9/2013	0.6	0.6	0.6	0.6
4	Particulates-Deposited Matter	g/m ² /month	Continuous	1	18/9/2013	24/9/2013	0.5	0.5	0.5	0.5
5	Particulates-Deposited Matter	g/m ² /month	Continuous	1	18/9/2013	24/9/2013	1.1	1.1	1.1	1.1
6	Particulates-Deposited Matter	g/m ² /month	Continuous	1	18/9/2013	24/9/2013	0.7	0.7	0.7	0.7
7	PM ₁₀	µg/m ³	Every 6 days	4	6,12,18,24/9/2013	4/10/2013	5.8	17.3	17.25	29.2
9	Conductivity	µS/cm	Special Frequency 1*	0	-	-	-	-	-	-
	Total organic carbon	mg/L		0	-	-	-	-	-	-
10	Conductivity	µS/cm	Special Frequency 1*	0	-	-	-	-	-	-
	Total organic carbon	mg/L		0	-	-	-	-	-	-

SUNNYSIDE COAL MINE – MONTHLY MONITORING SUMMARY

EPL ID	Pollutant	Units of Measure	Monitoring Frequency	No. of Samples for the Month	Date(s) Sampled	Date Obtained	Min Value	Mean Value	Median Value	Max Value
11	TSS	mg/L	Special Frequency 2**	0	-	-	-	-	-	-
	Conductivity	µS/cm		0	-	-	-	-	-	-
	Oil & Grease	mg/L		0	-	-	-	-	-	-
	pH	pH		0	-	-	-	-	-	-
	Total organic carbon	mg/L		0	-	-	-	-	-	-
12	TSS	mg/L	Special Frequency 2**	0	-	-	-	-	-	-
	Conductivity	µS/cm		0	-	-	-	-	-	-
	Oil & Grease	mg/L		0	-	-	-	-	-	-
	pH	pH		0	-	-	-	-	-	-
	Total organic carbon	mg/L		0	-	-	-	-	-	-

* Special Frequency 1 means the collection of samples as soon as practicable after each discharge commences and in any case not more than 12 hours after each discharge commences.

** Special Frequency 2 means collection of samples quarterly (in the event of flow during the quarter) at a time when there is flow and as soon as practicable after each wet weather discharge from points 9 and 10 commences and in any case not more than 12 hours after each discharge commences.

Table 2 - Pollutant Limits Apply

EPL ID	Pollutant	Units of Measure	Monitoring Frequency	No. of Samples for the Month	Date Sampled	Date Obtained	Min Value	Max Value	100%ile Limit	Exceedance (Yes/No)	Comments
9	TSS	mg/L	Special Frequency 1*	0	-	-	-	-	50	-	No discharge
	Oil & Grease	mg/L		0	-	-	-	-	10	-	No discharge
	pH	pH		0	-	-	-	-	6.5-8.5	-	No discharge
10	TSS	mg/L	Special Frequency 1*	0	-	-	-	-	50	-	No discharge
	Oil & Grease	mg/L		0	-	-	-	-	10	-	No discharge
	pH	pH		0	-	-	-	-	6.5-8.5	-	No discharge

SUNNYSIDE COAL MINE – MONTHLY MONITORING SUMMARY

Table 3 – Monitoring (Blasts – Limits Apply)

Location	Parameter	Units of Measure	Frequency	No. of Blasts for the Month	Average Value	Max Value	100%ile Limit	(Potential) Non-compliance /breach
R1	Blast Noise	dB (Lin Peak)	Every Blast	0	-	-	120	No blasting taking place
	Blast Vibration	mm/s			-	-	10	No blasting taking place
R2	Blast Noise	dB (Lin Peak)	Every Blast	0	-	-	120	No blasting taking place
	Blast Vibration	mm/s			-	-	10	No blasting taking place
R4	Blast Noise	dB (Lin Peak)	Every Blast	0	-	-	120	No blasting taking place
	Blast Vibration	mm/s			-	-	10	No blasting taking place
R6	Blast Noise	dB (Lin Peak)	Every Blast	0	-	-	120	No blasting taking place
	Blast Vibration	mm/s			-	-	10	No blasting taking place

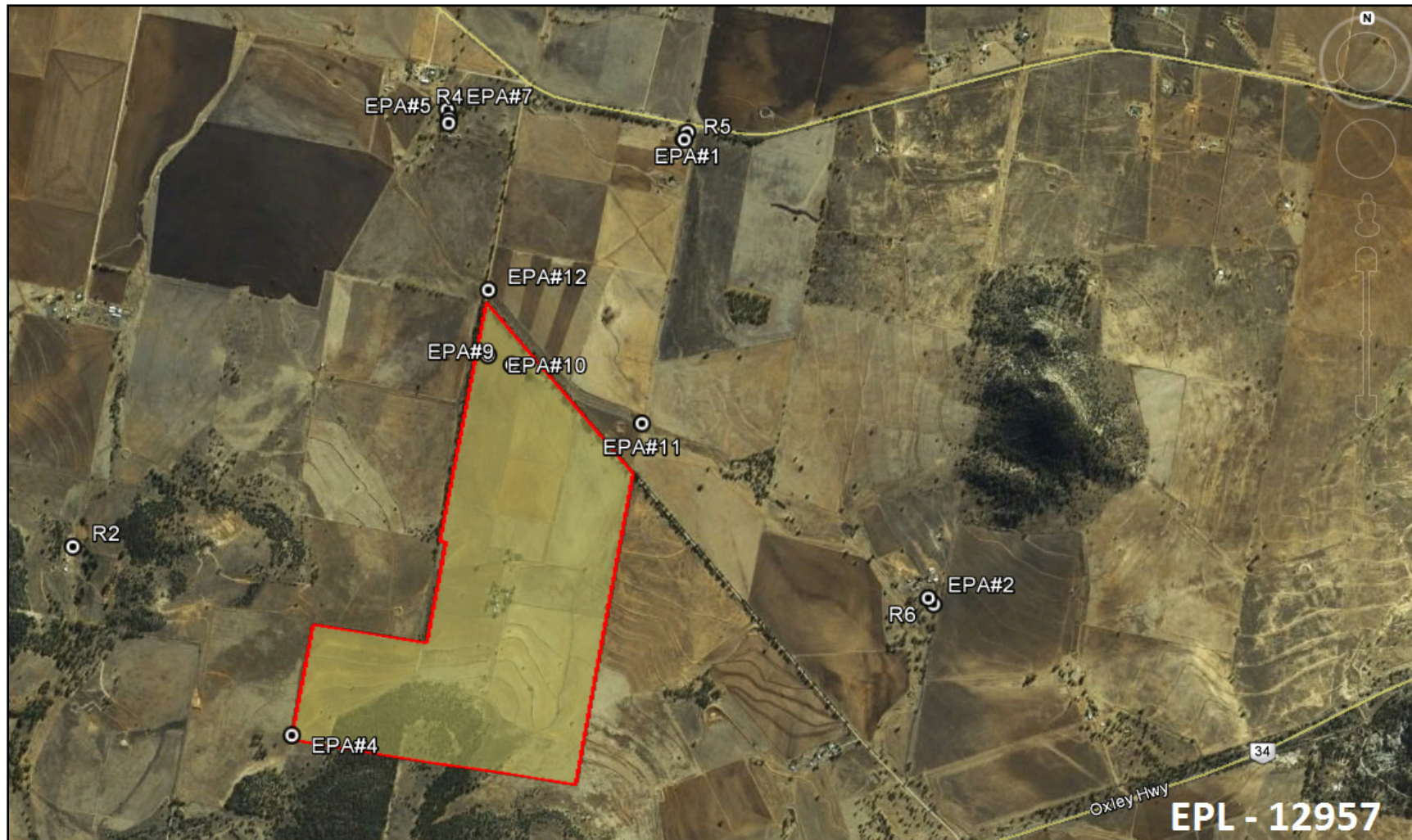
DNT – Indicates the blast did not trigger a result at the monitor.



WHITEHAVEN COAL

SUNNYSIDE COAL MINE – MONTHLY MONITORING SUMMARY

Figure 1 – EPL 12957 Monitoring Locations





SUNNYSIDE COAL MINE – MONTHLY MONITORING SUMMARY

Site Information

EPL No: 12957

EPA Website Link: <http://www.epa.nsw.gov.au/prpoeoapp/ViewPOEOLicence.aspx?DOCID=32488&SYSUID=1&LICID=12957>

Licensee: Namoi Mining Pty Ltd

Licensee Address: Sunnyside Coal Project, 259 Coocooboona Lane, GUNNEDAH NSW 2380

EPL Monitoring Points: See Figure 1 below

Sampling Period: October 2013

Publication Date: 19th November 2013 (re-published 9th September 2014)

Table 1 - No Pollutant Limits Apply

EPL ID	Pollutant	Units of Measure	Monitoring Frequency	No. of Samples for the Month	Date(s) Sampled	Date Obtained	Min Value	Mean Value	Median Value	Max Value
1	Particulates-Deposited Matter	g/m ² /month	Continuous	1	17/10/2013	28/10/2013	1.7	1.7	1.7	1.7
2	Particulates-Deposited Matter	g/m ² /month	Continuous	1	17/10/2013	28/10/2013	5.6	5.6	5.6	5.6
4	Particulates-Deposited Matter	g/m ² /month	Continuous	1	17/10/2013	28/10/2013	0.7	0.7	0.7	0.7
5	Particulates-Deposited Matter	g/m ² /month	Continuous	1	17/10/2013	28/10/2013	1.3	1.3	1.3	1.3
6	Particulates-Deposited Matter	g/m ² /month	Continuous	1	17/10/2013	28/10/2013	0.6	0.6	0.6	0.6
7	PM ₁₀	µg/m ³	Every 6 days	5	6,12,18,24,30/10/2013	12/11/2013	12.4	16.2	18.7	34.8
9	Conductivity	µS/cm	Special Frequency 1*	0	-	-	-	-	-	-
	Total organic carbon	mg/L		0	-	-	-	-	-	-
10	Conductivity	µS/cm	Special Frequency 1*	0	-	-	-	-	-	-
	Total organic carbon	mg/L		0	-	-	-	-	-	-

SUNNYSIDE COAL MINE – MONTHLY MONITORING SUMMARY

EPL ID	Pollutant	Units of Measure	Monitoring Frequency	No. of Samples for the Month	Date(s) Sampled	Date Obtained	Min Value	Mean Value	Median Value	Max Value
11	TSS	mg/L	Special Frequency 2**	0	-	-	-	-	-	-
	Conductivity	µS/cm		0	-	-	-	-	-	-
	Oil & Grease	mg/L		0	-	-	-	-	-	-
	pH	pH		0	-	-	-	-	-	-
	Total organic carbon	mg/L		0	-	-	-	-	-	-
12	TSS	mg/L	Special Frequency 2**	0	-	-	-	-	-	-
	Conductivity	µS/cm		0	-	-	-	-	-	-
	Oil & Grease	mg/L		0	-	-	-	-	-	-
	pH	pH		0	-	-	-	-	-	-
	Total organic carbon	mg/L		0	-	-	-	-	-	-

* Special Frequency 1 means the collection of samples as soon as practicable after each discharge commences and in any case not more than 12 hours after each discharge commences.

** Special Frequency 2 means collection of samples quarterly (in the event of flow during the quarter) at a time when there is flow and as soon as practicable after each wet weather discharge from points 9 and 10 commences and in any case not more than 12 hours after each discharge commences.

Table 2 - Pollutant Limits Apply

EPL ID	Pollutant	Units of Measure	Monitoring Frequency	No. of Samples for the Month	Date Sampled	Date Obtained	Min Value	Max Value	100%ile Limit	Exceedance (Yes/No)	Comments
9	TSS	mg/L	Special Frequency 1*	0	-	-	-	-	50	-	No discharge
	Oil & Grease	mg/L		0	-	-	-	-	10	-	No discharge
	pH	pH		0	-	-	-	-	6.5-8.5	-	No discharge
10	TSS	mg/L	Special Frequency 1*	0	-	-	-	-	50	-	No discharge
	Oil & Grease	mg/L		0	-	-	-	-	10	-	No discharge
	pH	pH		0	-	-	-	-	6.5-8.5	-	No discharge

SUNNYSIDE COAL MINE – MONTHLY MONITORING SUMMARY

Table 3 – Monitoring (Blasts – Limits Apply)

Location	Parameter	Units of Measure	Frequency	No. of Blasts for the Month	Average Value	Max Value	100%ile Limit	(Potential) Non-compliance /breach
R1	Blast Noise	dB (Lin Peak)	Every Blast	0	-	-	120	No blasting taking place
	Blast Vibration	mm/s			-	-	10	No blasting taking place
R2	Blast Noise	dB (Lin Peak)	Every Blast	0	-	-	120	No blasting taking place
	Blast Vibration	mm/s			-	-	10	No blasting taking place
R4	Blast Noise	dB (Lin Peak)	Every Blast	0	-	-	120	No blasting taking place
	Blast Vibration	mm/s			-	-	10	No blasting taking place
R6	Blast Noise	dB (Lin Peak)	Every Blast	0	-	-	120	No blasting taking place
	Blast Vibration	mm/s			-	-	10	No blasting taking place

DNT – Indicates the blast did not trigger a result at the monitor.



WHITEHAVEN COAL

SUNNYSIDE COAL MINE – MONTHLY MONITORING SUMMARY

Figure 1 – EPL 12957 Monitoring Locations





SUNNYSIDE COAL MINE – MONTHLY MONITORING SUMMARY

Site Information

EPL No: 12957

EPA Website Link: <http://www.epa.nsw.gov.au/prpoeoapp/ViewPOEOLicence.aspx?DOCID=32488&SYSUID=1&LICID=12957>

Licensee: Namoi Mining Pty Ltd

Licensee Address: Sunnyside Coal Project, 259 Coocooboona Lane, GUNNEDAH NSW 2380

EPL Monitoring Points: See Figure 1 below

Sampling Period: November 2013

Publication Date: 19th December 2013 (re-published 9th September 2014)

Table 1 - No Pollutant Limits Apply

EPL ID	Pollutant	Units of Measure	Monitoring Frequency	No. of Samples for the Month	Date(s) Sampled	Date Obtained	Min Value	Mean Value	Median Value	Max Value
1	Particulates-Deposited Matter	g/m ² /month	Continuous	1	15/11/2013	26/11/2013	1.7	1.7	1.7	1.7
2	Particulates-Deposited Matter	g/m ² /month	Continuous	1	15/11/2013	26/11/2013	3.5	3.5	3.5	3.5
4	Particulates-Deposited Matter	g/m ² /month	Continuous	1	15/11/2013	26/11/2013	0.7	0.7	0.7	0.7
5	Particulates-Deposited Matter	g/m ² /month	Continuous	1	15/11/2013	26/11/2013	0.1	0.1	0.1	0.1
6	Particulates-Deposited Matter	g/m ² /month	Continuous	1	15/11/2013	26/11/2013	1.3	1.3	1.3	1.3
7	PM ₁₀	µg/m ³	Every 6 days	4	5,11,17,23/11/2013	13/12/2013	5.5	9.7	7.3	18.6
9	Conductivity	µS/cm	Special Frequency 1*	0	-	-	-	-	-	-
	Total organic carbon	mg/L		0	-	-	-	-	-	-
10	Conductivity	µS/cm	Special Frequency 1*	0	-	-	-	-	-	-
	Total organic carbon	mg/L		0	-	-	-	-	-	-

SUNNYSIDE COAL MINE – MONTHLY MONITORING SUMMARY

EPL ID	Pollutant	Units of Measure	Monitoring Frequency	No. of Samples for the Month	Date(s) Sampled	Date Obtained	Min Value	Mean Value	Median Value	Max Value
11	TSS	mg/L	Special Frequency 2**	0	-	-	-	-	-	-
	Conductivity	µS/cm		0	-	-	-	-	-	-
	Oil & Grease	mg/L		0	-	-	-	-	-	-
	pH	pH		0	-	-	-	-	-	-
	Total organic carbon	mg/L		0	-	-	-	-	-	-
12	TSS	mg/L	Special Frequency 2**	0	-	-	-	-	-	-
	Conductivity	µS/cm		0	-	-	-	-	-	-
	Oil & Grease	mg/L		0	-	-	-	-	-	-
	pH	pH		0	-	-	-	-	-	-
	Total organic carbon	mg/L		0	-	-	-	-	-	-

* Special Frequency 1 means the collection of samples as soon as practicable after each discharge commences and in any case not more than 12 hours after each discharge commences.

** Special Frequency 2 means collection of samples quarterly (in the event of flow during the quarter) at a time when there is flow and as soon as practicable after each wet weather discharge from points 9 and 10 commences and in any case not more than 12 hours after each discharge commences.

Table 2 - Pollutant Limits Apply

EPL ID	Pollutant	Units of Measure	Monitoring Frequency	No. of Samples for the Month	Date Sampled	Date Obtained	Min Value	Max Value	100%ile Limit	Exceedance (Yes/No)	Comments
9	TSS	mg/L	Special Frequency 1*	0	-	-	-	-	50	-	No discharge
	Oil & Grease	mg/L		0	-	-	-	-	10	-	No discharge
	pH	pH		0	-	-	-	-	6.5-8.5	-	No discharge
10	TSS	mg/L	Special Frequency 1*	0	-	-	-	-	50	-	No discharge
	Oil & Grease	mg/L		0	-	-	-	-	10	-	No discharge
	pH	pH		0	-	-	-	-	6.5-8.5	-	No discharge

SUNNYSIDE COAL MINE – MONTHLY MONITORING SUMMARY

Table 3 – Monitoring (Blasts – Limits Apply)

Location	Parameter	Units of Measure	Frequency	No. of Blasts for the Month	Average Value	Max Value	100%ile Limit	(Potential) Non-compliance /breach
R1	Blast Noise	dB (Lin Peak)	Every Blast	0	-	-	120	No blasting taking place
	Blast Vibration	mm/s			-	-	10	No blasting taking place
R2	Blast Noise	dB (Lin Peak)	Every Blast	0	-	-	120	No blasting taking place
	Blast Vibration	mm/s			-	-	10	No blasting taking place
R4	Blast Noise	dB (Lin Peak)	Every Blast	0	-	-	120	No blasting taking place
	Blast Vibration	mm/s			-	-	10	No blasting taking place
R6	Blast Noise	dB (Lin Peak)	Every Blast	0	-	-	120	No blasting taking place
	Blast Vibration	mm/s			-	-	10	No blasting taking place

DNT – Indicates the blast did not trigger a result at the monitor.



WHITEHAVEN COAL

SUNNYSIDE COAL MINE – MONTHLY MONITORING SUMMARY

Figure 1 – EPL 12957 Monitoring Locations





SUNNYSIDE COAL MINE – MONTHLY MONITORING SUMMARY

Site Information

EPL No: 12957

EPA Website Link: <http://www.epa.nsw.gov.au/prpoeoapp/ViewPOEOLicence.aspx?DOCID=32488&SYSUID=1&LICID=12957>

Licensee: Namoi Mining Pty Ltd

Licensee Address: Sunnyside Coal Project, 259 Coocooboonah Lane, GUNNEDAH NSW 2380

EPL Monitoring Points: See Figure 1 below

Sampling Period: December 2013

Publication Date: 16th January 2014 (re-published 9th September 2014)

Table 1 - No Pollutant Limits Apply

EPL ID	Pollutant	Units of Measure	Monitoring Frequency	No. of Samples for the Month	Date(s) Sampled	Date Obtained	Min Value	Mean Value	Median Value	Max or Only Value
1	Particulates-Deposited Matter	g/m ² /month	Continuous	1	17/12/2013	3/1/2014	-	-	-	1.8
2	Particulates-Deposited Matter	g/m ² /month	Continuous	1	17/12/2013	3/1/2014	-	-	-	2.1
4	Particulates-Deposited Matter	g/m ² /month	Continuous	1	17/12/2013	3/1/2014	-	-	-	1.5
5	Particulates-Deposited Matter	g/m ² /month	Continuous	1	17/12/2013	3/1/2014	-	-	-	1.1
6	Particulates-Deposited Matter	g/m ² /month	Continuous	1	17/12/2013	3/1/2014	-	-	-	1.7
7	PM ₁₀	µg/m ³	Every 6 days	6	Various	15/1/2014	5.1	17.6	18.0	30.0
9	Conductivity	µS/cm	Special Frequency 1*	0	-	-	-	-	-	-
	Total organic carbon	mg/L		0	-	-	-	-	-	-
10	Conductivity	µS/cm	Special Frequency 1*	0	-	-	-	-	-	-
	Total organic carbon	mg/L		0	-	-	-	-	-	-

SUNNYSIDE COAL MINE – MONTHLY MONITORING SUMMARY

EPL ID	Pollutant	Units of Measure	Monitoring Frequency	No. of Samples for the Month	Date(s) Sampled	Date Obtained	Min Value	Mean Value	Median Value	Max or Only Value
11	TSS	mg/L	Special Frequency 2**	0	-	-	-	-	-	-
	Conductivity	µS/cm		0	-	-	-	-	-	-
	Oil & Grease	mg/L		0	-	-	-	-	-	-
	pH	pH		0	-	-	-	-	-	-
	Total organic carbon	mg/L		0	-	-	-	-	-	-
12	TSS	mg/L	Special Frequency 2**	0	-	-	-	-	-	-
	Conductivity	µS/cm		0	-	-	-	-	-	-
	Oil & Grease	mg/L		0	-	-	-	-	-	-
	pH	pH		0	-	-	-	-	-	-
	Total organic carbon	mg/L		0	-	-	-	-	-	-

* Special Frequency 1 means the collection of samples as soon as practicable after each discharge commences and in any case not more than 12 hours after each discharge commences.

** Special Frequency 2 means collection of samples quarterly (in the event of flow during the quarter) at a time when there is flow and as soon as practicable after each wet weather discharge from points 9 and 10 commences and in any case not more than 12 hours after each discharge commences.

Table 2 - Pollutant Limits Apply

EPL ID	Pollutant	Units of Measure	Monitoring Frequency	No. of Samples for the Month	Date Sampled	Date Obtained	Min Value	Max Value	100%ile Limit	Exceedance (Yes/No)	Comments
9	TSS	mg/L	Special Frequency 1*	0	-	-	-	-	50	-	No discharge
	Oil & Grease	mg/L		0	-	-	-	-	10	-	No discharge
	pH	pH		0	-	-	-	-	6.5-8.5	-	No discharge
10	TSS	mg/L	Special Frequency 1*	0	-	-	-	-	50	-	No discharge
	Oil & Grease	mg/L		0	-	-	-	-	10	-	No discharge
	pH	pH		0	-	-	-	-	6.5-8.5	-	No discharge

SUNNYSIDE COAL MINE – MONTHLY MONITORING SUMMARY

Table 3 – Monitoring (Blasts – Limits Apply)

Location	Parameter	Units of Measure	Frequency	No. of Blasts for the Month	Average Value	Max Value	100%ile Limit	(Potential) Non-compliance /breach
R1	Blast Noise	dB (Lin Peak)	Every Blast	0	-	-	120	No blasting taking place
	Blast Vibration	mm/s			-	-	10	No blasting taking place
R2	Blast Noise	dB (Lin Peak)	Every Blast	0	-	-	120	No blasting taking place
	Blast Vibration	mm/s			-	-	10	No blasting taking place
R4	Blast Noise	dB (Lin Peak)	Every Blast	0	-	-	120	No blasting taking place
	Blast Vibration	mm/s			-	-	10	No blasting taking place
R6	Blast Noise	dB (Lin Peak)	Every Blast	0	-	-	120	No blasting taking place
	Blast Vibration	mm/s			-	-	10	No blasting taking place

DNT – Indicates the blast did not trigger a result at the monitor.



WHITEHAVEN COAL

SUNNYSIDE COAL MINE – MONTHLY MONITORING SUMMARY

Figure 1 – EPL 12957 Monitoring Locations

